

How to install WN-370USB driver on Win8

1. Check the Realtek Website as below link:
2. <http://www.realtek.com.tw/downloads/downloadsView.aspx?Langid=1&PNid=48&PFid=48&Level=5&Conn=4&DownTypeID=3&GetDown=false&Downloads=true#RTL8188SU>
3. Download the file: RTL8188SU -> Utility and Driver Auto Installation Program (Support Win2K/XP/Vista/Win7)(Install Shield v1.00.0187)-> Win7=v1086.48.0809.2011
XPVista=v1084.53.0809.2011

RTL8188SU

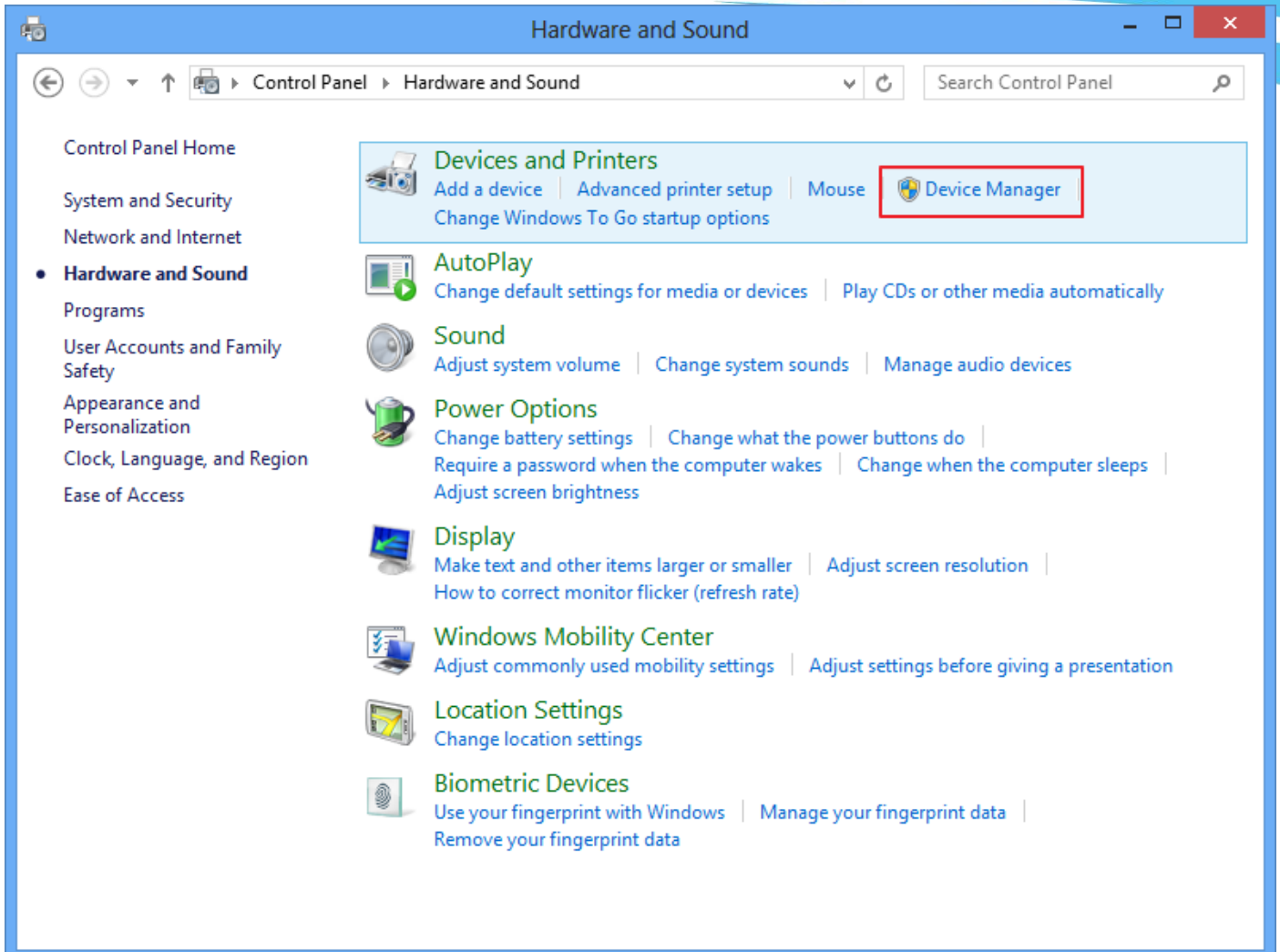
| [Windows](#) | [Unix \(Linux\)](#) | [Others](#) |

Windows

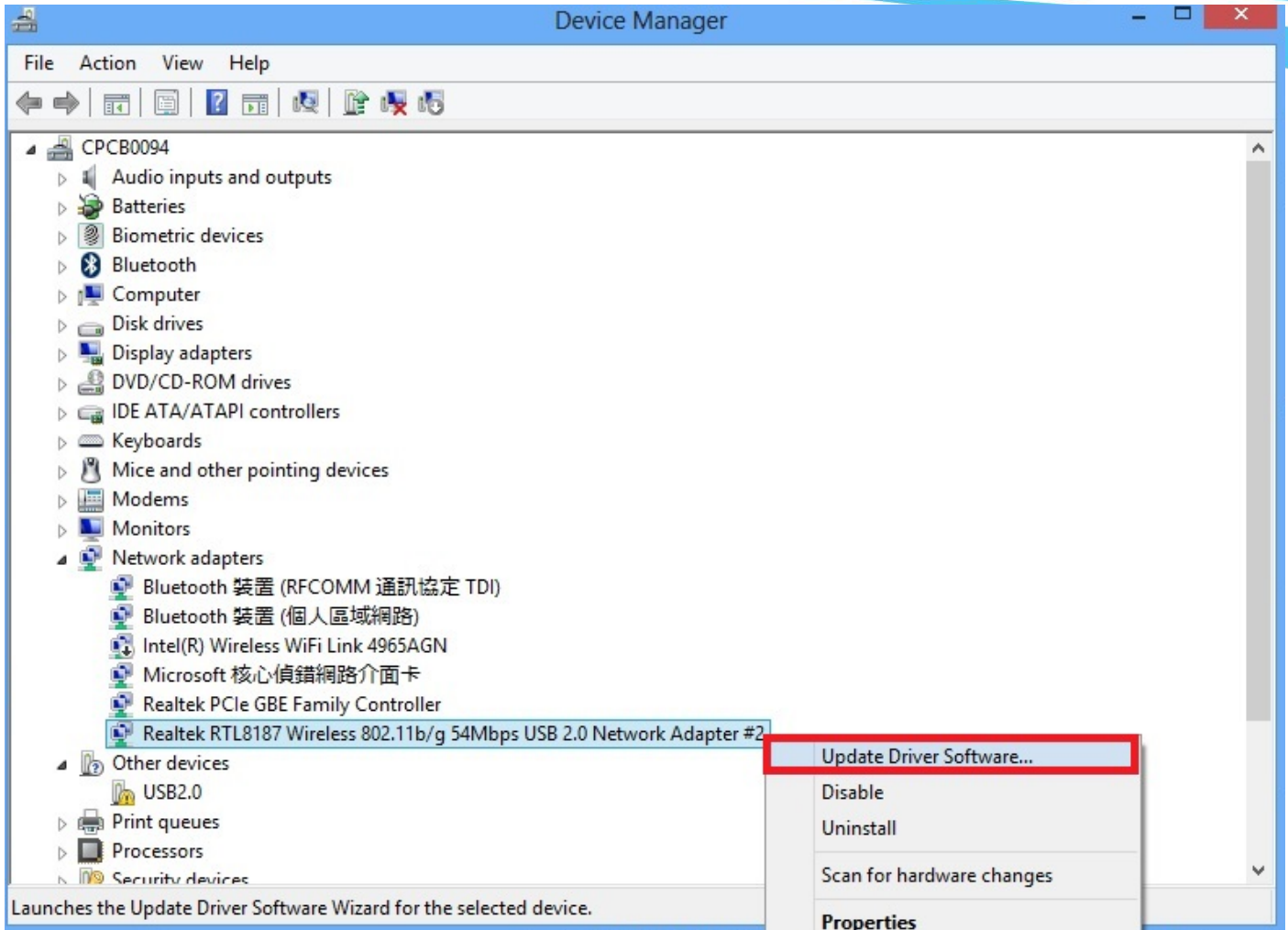
Description	Version	Update Time	File Size	Download					
				Site 1	Site 2	Site 3	Site 4	Site 5	Site 6
Utility and Driver Auto Installation Program (Support Win2K/XP/Vista/Win7)(Install Shield v1.00.0187)	Win7=v1086.48.0809.2011 XPVista=v1084.53.0809.2011	2012/4/19	29121k	CN	HK1	US3	US2	UK1	US1

4. Please follow the steps 5~8, go to the device manager, install the driver manually, by select the folder you where you had unpacked; do not install the driver by auto setup.

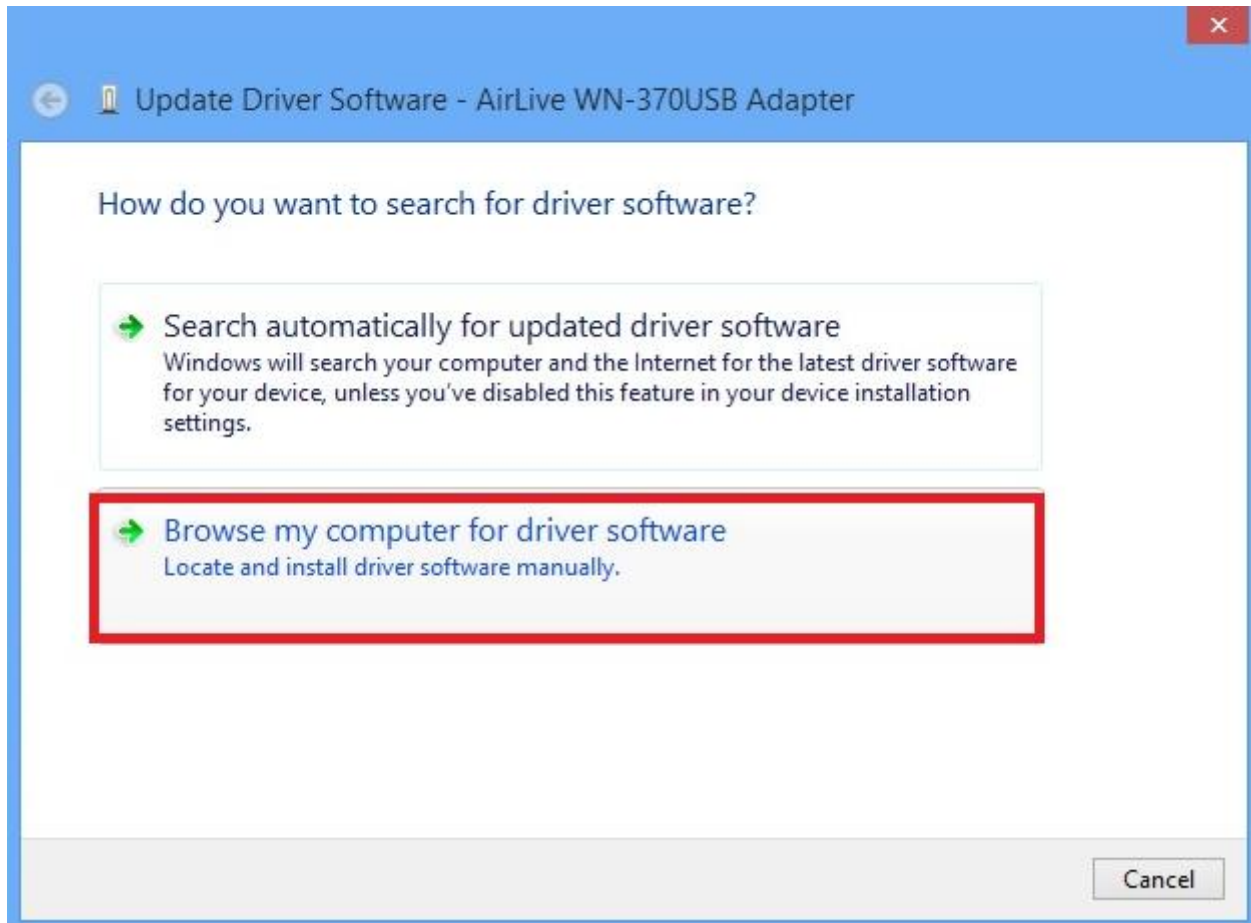
5. Go to the device manager



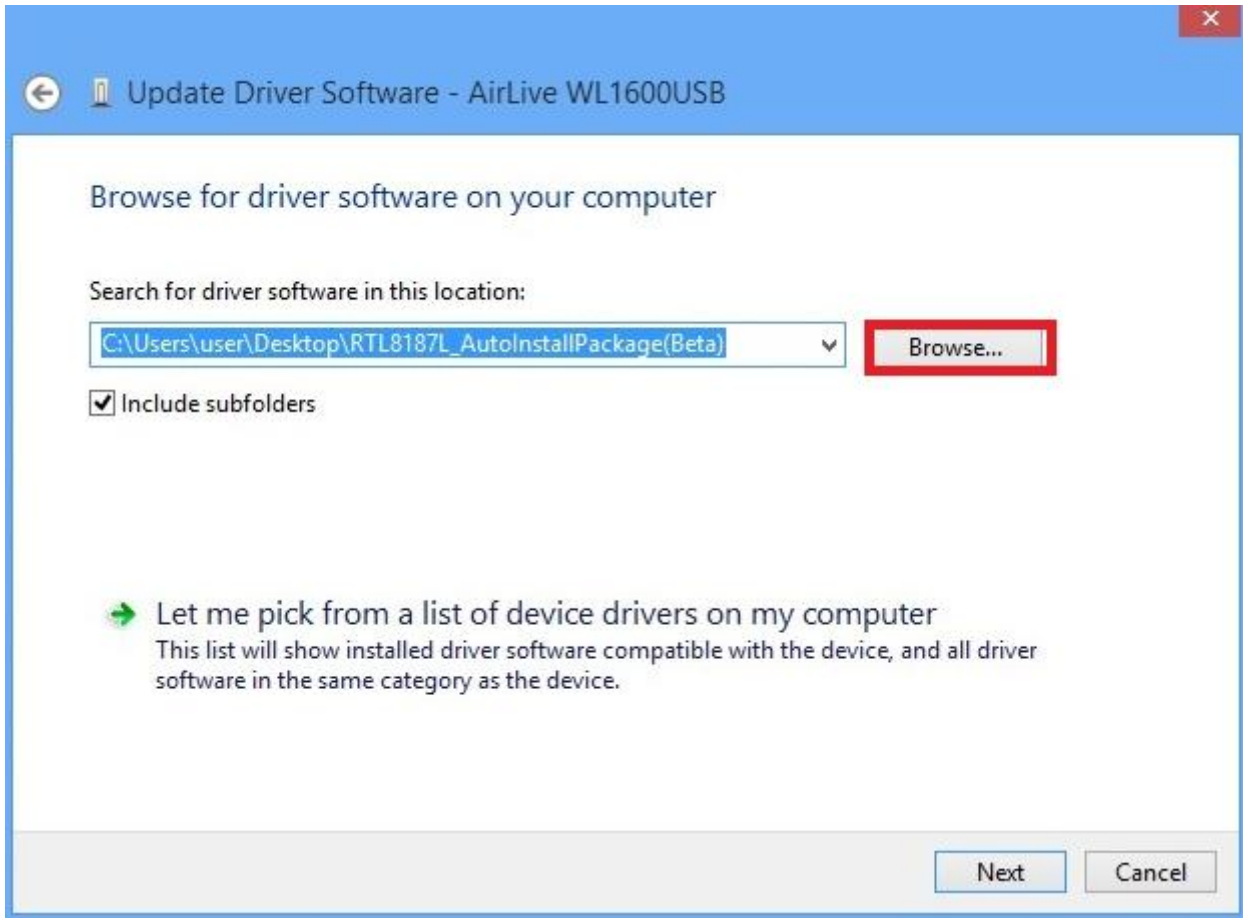
6. Right click RTL8188 Wireless Adapter, select "Update Driver Software".



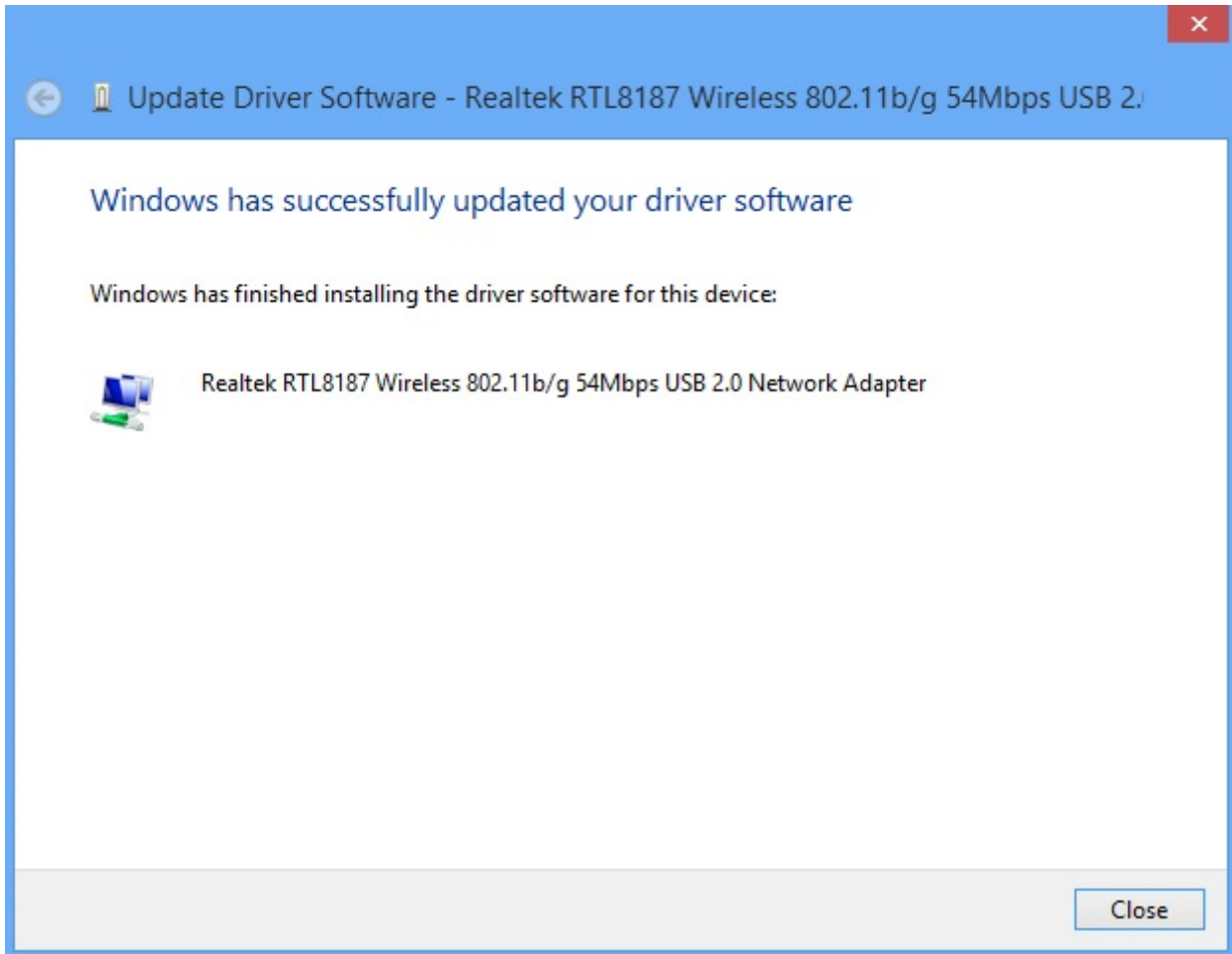
7. Install the driver manually, by select the folder you where you had unpacked.



8. Select the folder you where you had unpacked.



9. Driver install correctly.



10. Airlive wireless card can work on win8 as well.

